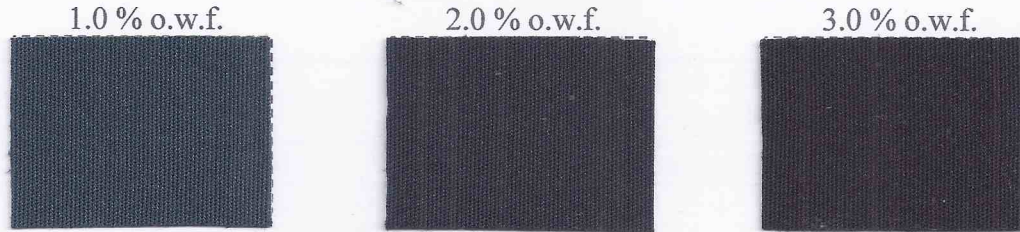




## Taicron Black SF-GT ECO 300%

### Exhaustion Dyeing 浸染



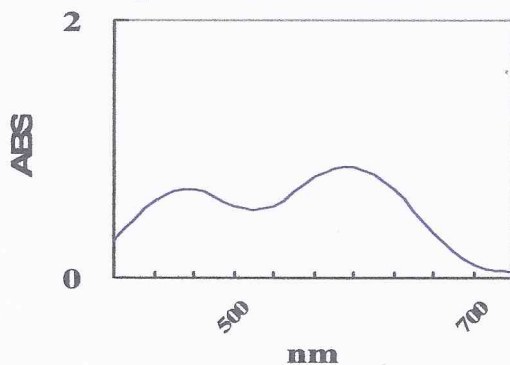
### Dyes Properties 染料特性

Dispersibility 分散性	Migration 移染性	Liquor ratio 浴比	pH range pH 範圍	HT Dyeing 高溫染色	Carrier Dyeing 導染劑法
◎~○	◎~○	◎	3~9	◎	○~△

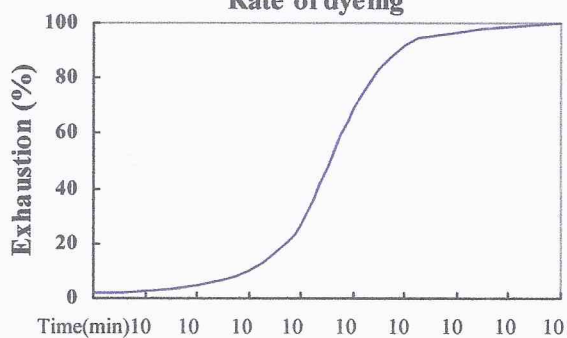
Effect of Metal Ion 金屬離子影響				Rate of Dyeing 染色速率	Build up 上色性
Fe <sup>++</sup>	Cu <sup>++</sup>	Mg <sup>++</sup>	Ca <sup>++</sup>	◎	◎
◎	○~△	◎	◎		

Staining on 纖維污染			Exhaustion 浸染適性	Continuous 連染適性	Printing 印花適性
Nylon	Cotton	Rayon	◎	◎~○	◎
1~2	4	5			

### Spectral reflectance



### Rate of dyeing





## Taicron Black SF-GT ECO 300%

### Washing Properties 水洗特性 (3.0 % o.w.f.)

49°C (AATCC 61 2A) 49°C 耐水洗						Dry Heat 耐乾熱	
Acetate	Cotton	Nylon	Polyester	Acrylic	Wool	165°C	180°C
4~5	5	3~4	4~5	5	5	4	4~5

60°C (M&S C4A) 60°C 耐水洗						Chlorine 耐氯水	
Acetate	Cotton	Nylon	Polyester	Acrylic	Wool	Alter 色變	Pes 污染
4	5	3	4	5	5	5	5

### Color Fastness 堅牢度 (3.0 % o.w.f.)

Sublimation 耐昇華		Rubbing 耐摩擦		Perspiration 耐汗	
N	Pes	Dry 乾	Wet 濕	Acid 酸	Alkali 鹼
3~4	4	5	4~5	5	5

Light 耐光		Water 耐水		Dry Cleaning 耐乾洗	
1.0 % o.w.f.	3.0 % o.w.f.	Nylon	Cotton	Alter 色變	Pes 污染
4~5	6	5	5	5	5

### Printing Properties 印花特性

Dischargeability				Sublimation Staining on Fixation 機內昇華污染	
Reduction agent 還原劑		Alkali agent 鹼劑		HP	HT
White 拔白	Color 入色	White 拔白	Color 入色		
◎~○	X	X	X	◎	◎