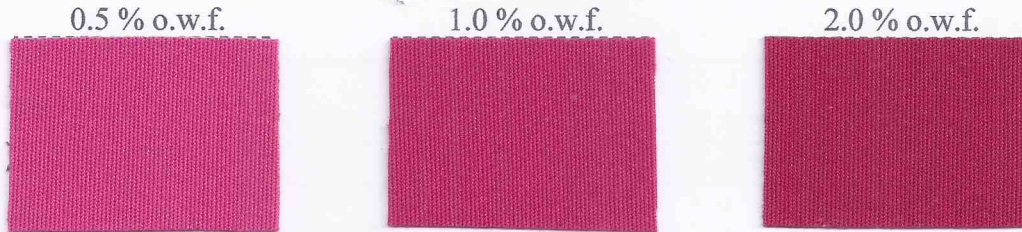




Taicron Rubine SF-2GFL

Exhaustion Dyeing 浸染



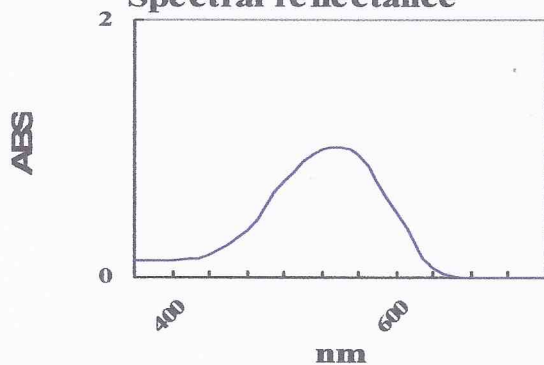
Dyes Properties 染料特性

Dispersibility 分散性	Migration 移染性	Liquor ratio 浴比	pH range pH 範圍	HT Dyeing 高溫染色	Carrier Dyeing 導染劑法
◎	◎ ~ ○	◎	3~9	◎	△ ~ X

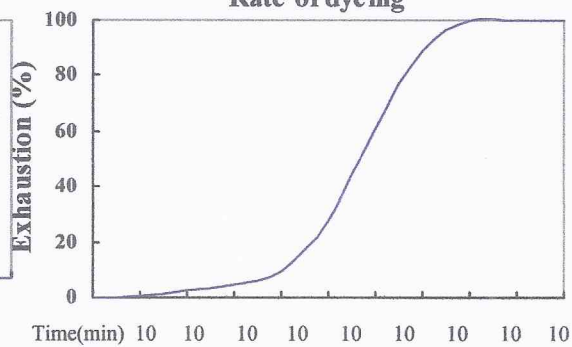
Effect of Metal Ion 金屬離子影響				Rate of Dyeing 染色速率	Build up 上色性
Fe ⁺⁺	Cu ⁺⁺	Mg ⁺⁺	Ca ⁺⁺	◎	◎
◎	◎	◎	◎		

Staining on 纖維污染			Exhaustion 浸染適性	Continuous 連染適性	Printing 印花適性
Nylon	Cotton	Rayon	◎	◎	◎
1~2	4~5	5			

Spectral reflectance



Rate of dyeing





Taicron Rubine SF-2GFL

Washing Properties 水洗特性 (2.0 % o.w.f.)

49°C (AATCC 61 2A) 49°C 耐水洗						Dry Heat 耐乾熱	
Acetate	Cotton	Nylon	Polyester	Acrylic	Wool	165°C	180°C
4	5	4	4~5	5	5	5	4~5

60°C (M&S C4A) 60°C 耐水洗						Chlorine 耐氯水	
Acetate	Cotton	Nylon	Polyester	Acrylic	Wool	Alter 色變	Pes 污染
4	5	4	3~4	4~5	4	4~5	5

Color Fastness 堅牢度 (2.0 % o.w.f.)

Sublimation 耐昇華		Rubbing 耐摩擦		Perspiration 耐汗	
N	Pes	Dry 乾	Wet 濕	Acid 酸	Alkali 鹼
4	4	5	5	5	5

Light 耐光		Water 耐水		Dry Cleaning 耐乾洗	
0.5 % o.w.f.	2.0 % o.w.f.	Nylon	Cotton	Alter 色變	Pes 污染
5~6	6~7	5	5	4~5	4

Printing Properties 印花特性

Dischargeability				Elimination Staining on Fixa 機內昇華污染	
Reduction agent 還原劑		Alkali agent 鹼劑		HP	HT
White 拔白	Color 入色	White 拔白	Color 入色		
X	X	X	X	⊙ ○	⊙